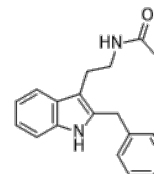


Product Name : Luzindole
Cat. No. : PC-23430
CAS No. : 117946-91-5
Molecular Formula : C₁₉H₂₀N₂O
Molecular Weight : 292.38
Target : Melatonin Receptor
Solubility : 10 mM in DMSO



Biological Activity

Luzindole (N-0774) is a potent, selective melatonin receptor antagonist with K_i of 10.2 nM and 158 nM for human MT₂ and MT₁, respectively.

Luzindole (N-0774) shows anti-immobility effect and exerts antidepressant-like activity in the C3H/HeN mouse by antagonizing the action of endogenous hormone.

References

Dubocovich ML, et al. Eur J Pharmacol. 1990 Jul 3;182(2):313-25.

Dubocovich ML. J Pharmacol Exp Ther. 1988 Sep;246(3):902-10.

Constantinescu CS, et al. 1997;65(4):190-4.

Caution: Product has not been fully validated for medical applications. Lab Use Only!

E-mail: tech@probechem.com